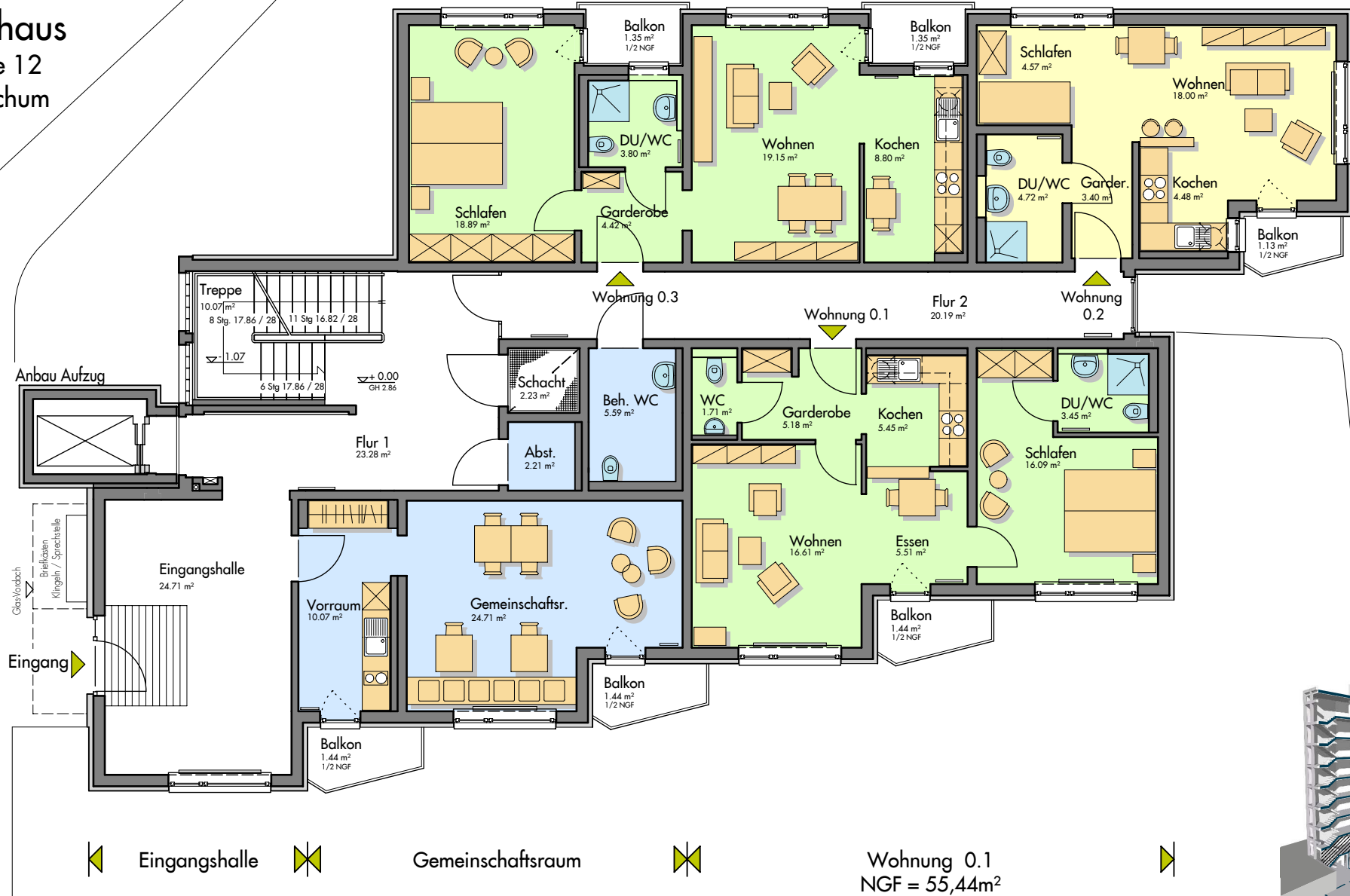


Wohnung 0.3
NGF = 57,76m²

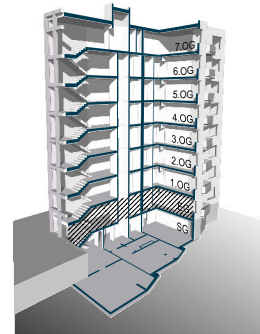
Wohnung 0.2
NGF = 36,30m²

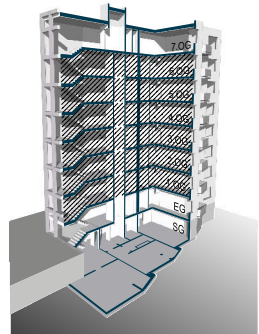
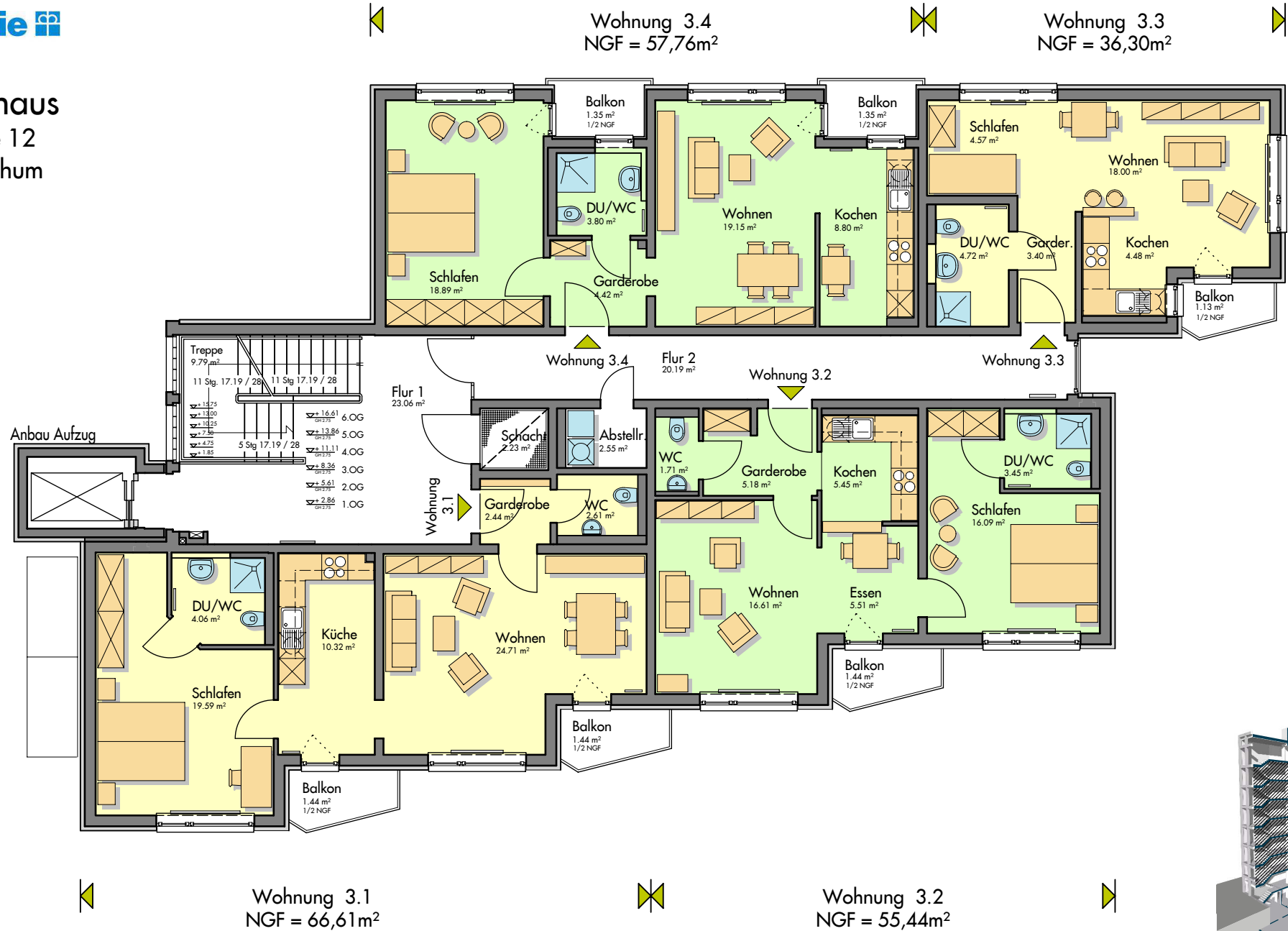


Erdgeschoss

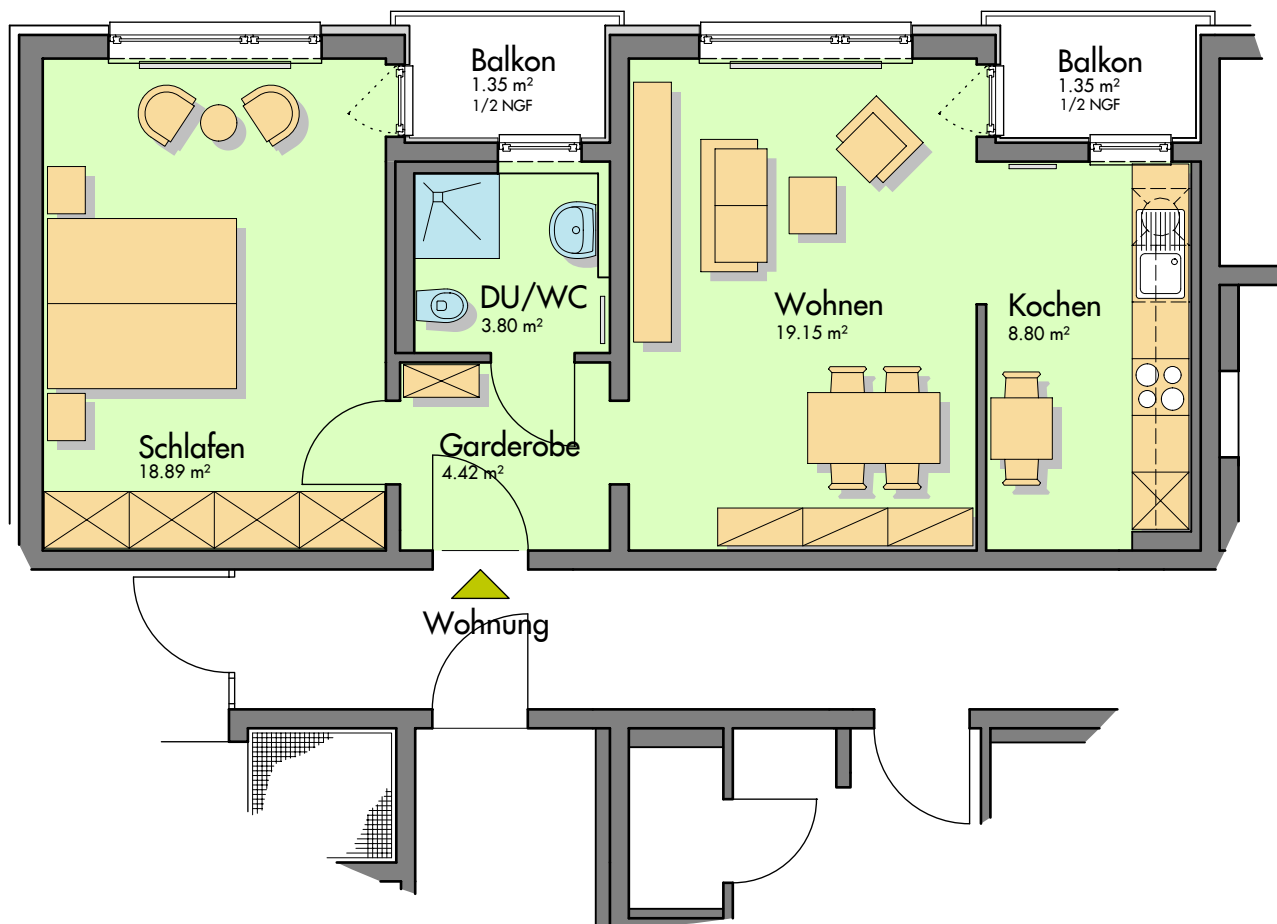
0 1 2 3 4 5

10 m





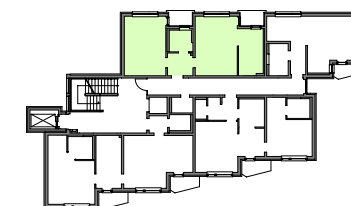
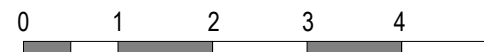
Wohnungstyp 1
NGF = 57,76m²

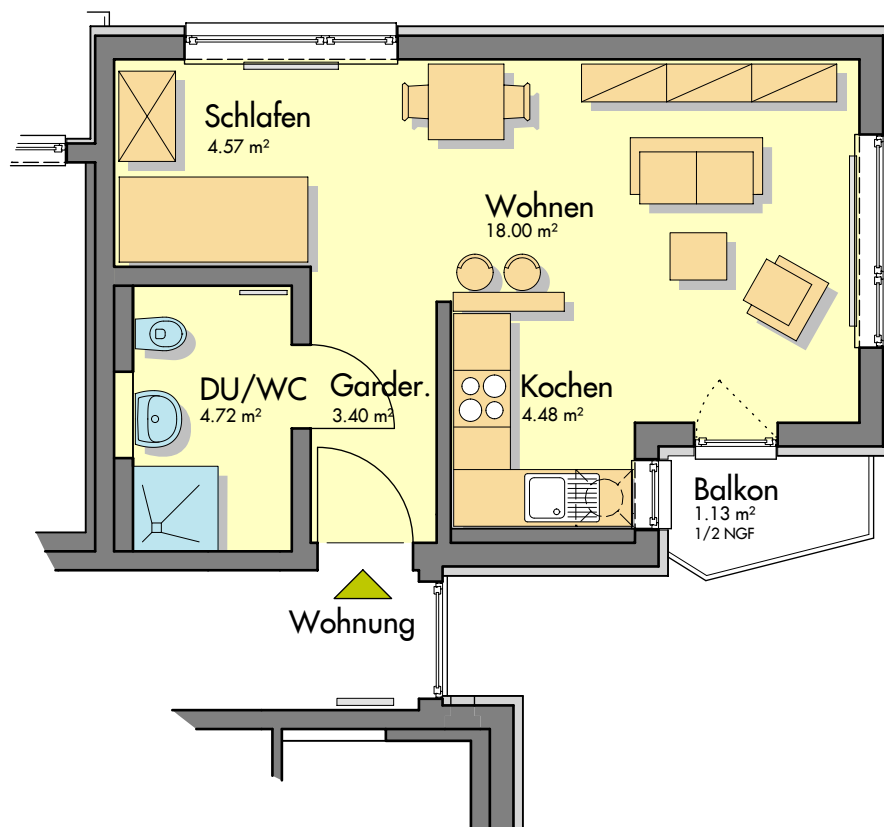


Typ 1: 8x vorhanden 57,76 m²

Wohnen	19,15 m ²
Kochen	8,80 m ²
Schlafen	18,89 m ²
Garderobe	4,42 m ²
DU / WC	3,80 m ²
Balkon	1,35 m ²
(1/2 der NGF)	
Balkon	1,35 m ²
(1/2 der NGF)	

Wohnungstyp 1 (8x) EG/1.-7.OG



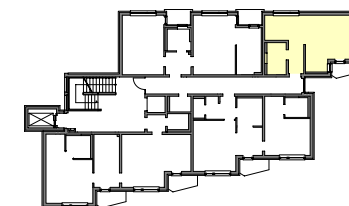


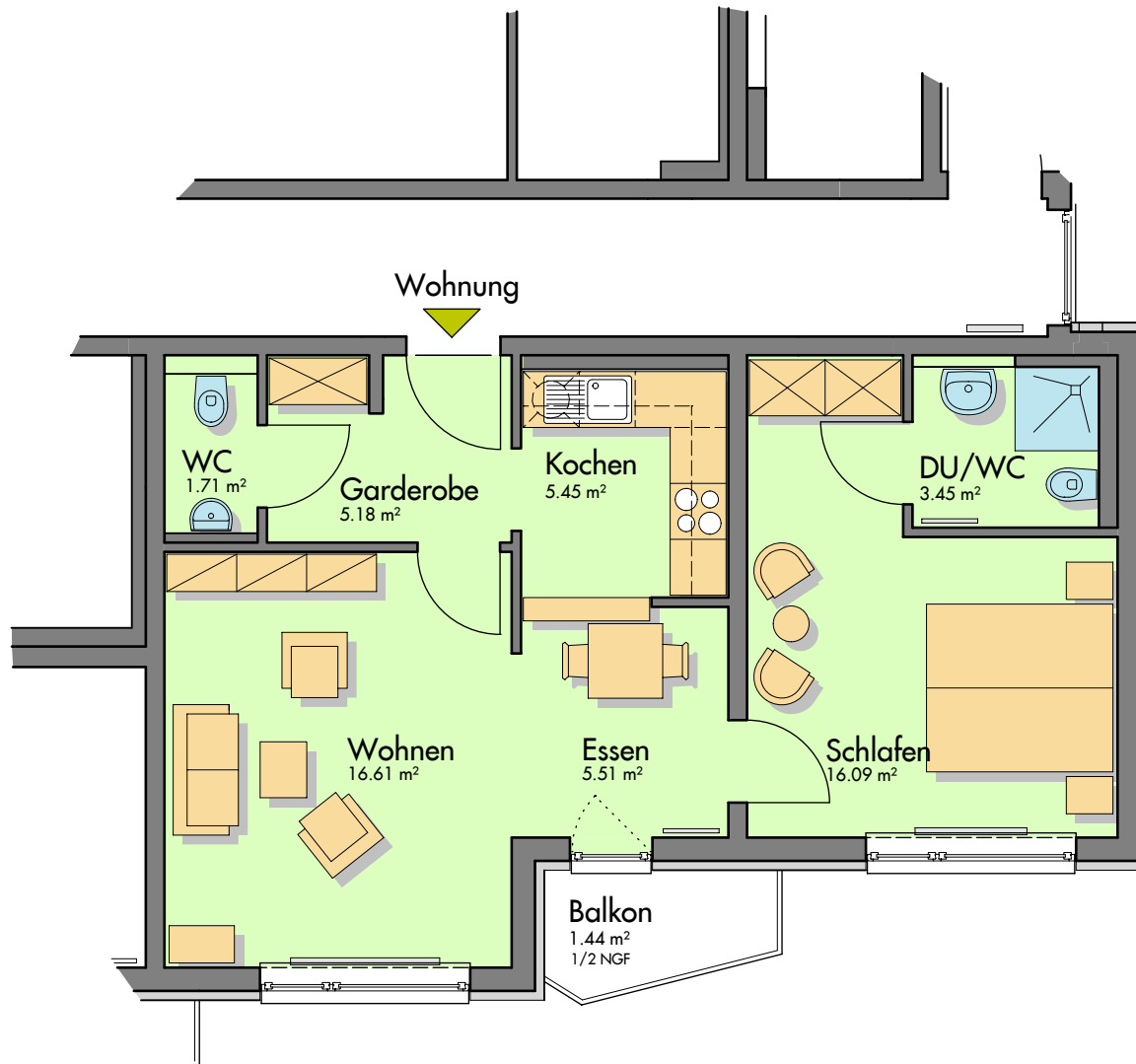
Wohnungstyp 2
NGF = 36,30m²

Typ2: 7x vorhanden 36,30 m²

Wohnen	18,00 m ²
Kochen	4,48 m ²
Schlafen	4,57 m ²
Garderobe	3,40 m ²
DU / WC	4,72 m ²
Balkon	1,13 m ²
(1/2 der NGF)	

Wohnungstyp 2 (7x) EG/1.-6. OG



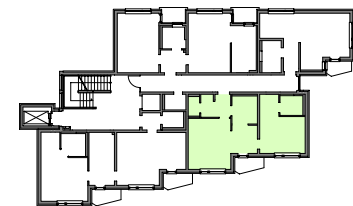
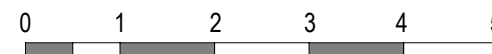


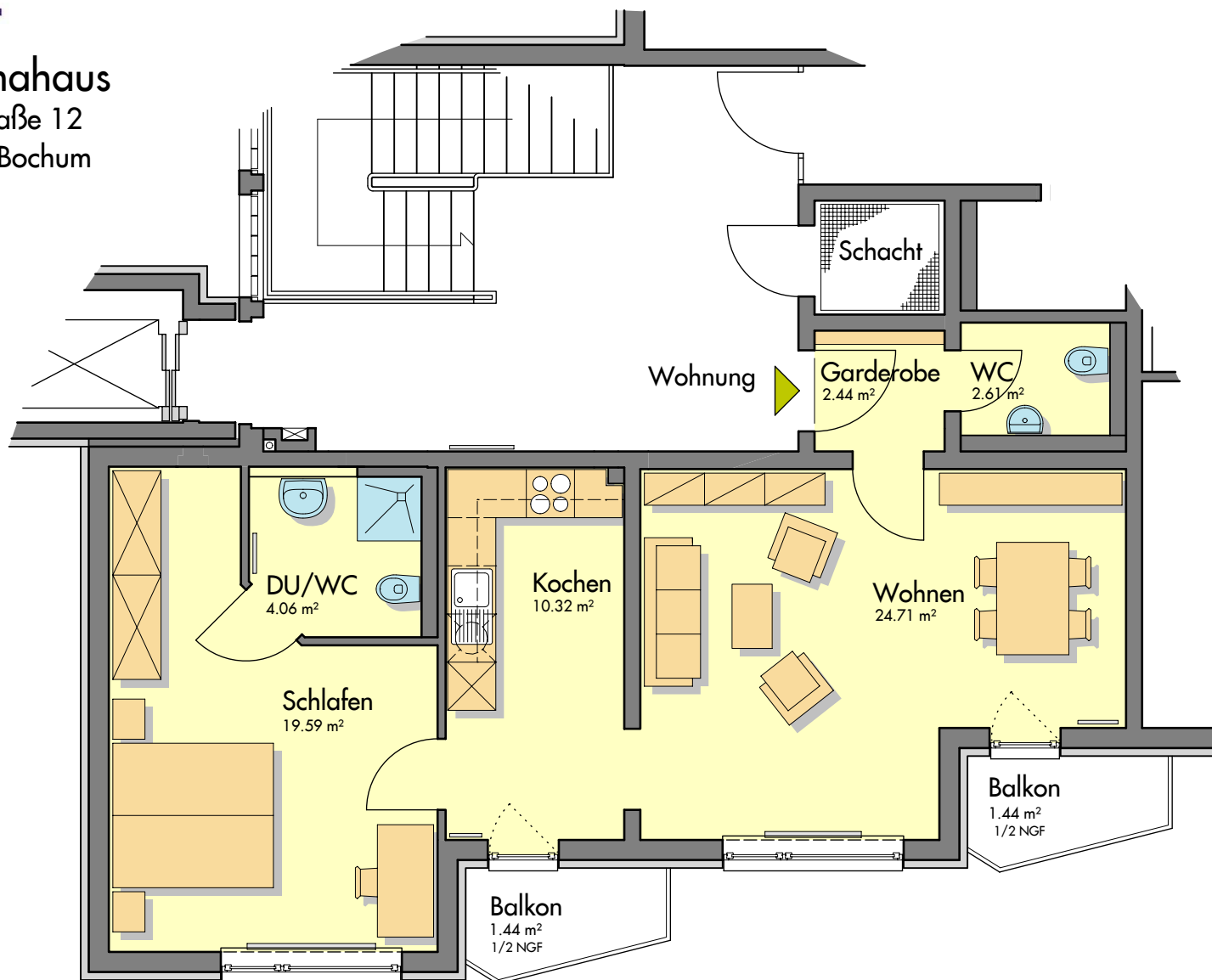
Wohnungstyp 3
NGF = 55,44m²

Typ3: 7x vorhanden 55,44 m²

Wohnen	16,61 m ²
Kochen	5,45 m ²
Essen	5,51 m ²
Schlafen	16,09 m ²
Garderobe	5,18 m ²
DU / WC	3,45 m ²
WC	1,71 m ²
Balkon	1,44 m ²
(1/2 der NGF)	

Wohnungstyp 3 (7x) EG/1.-6. OG

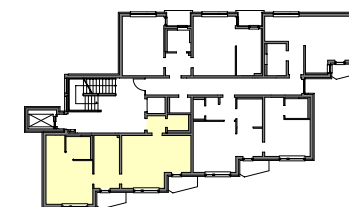




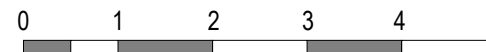
Wohnungstyp 4
NGF = 66,61 m²

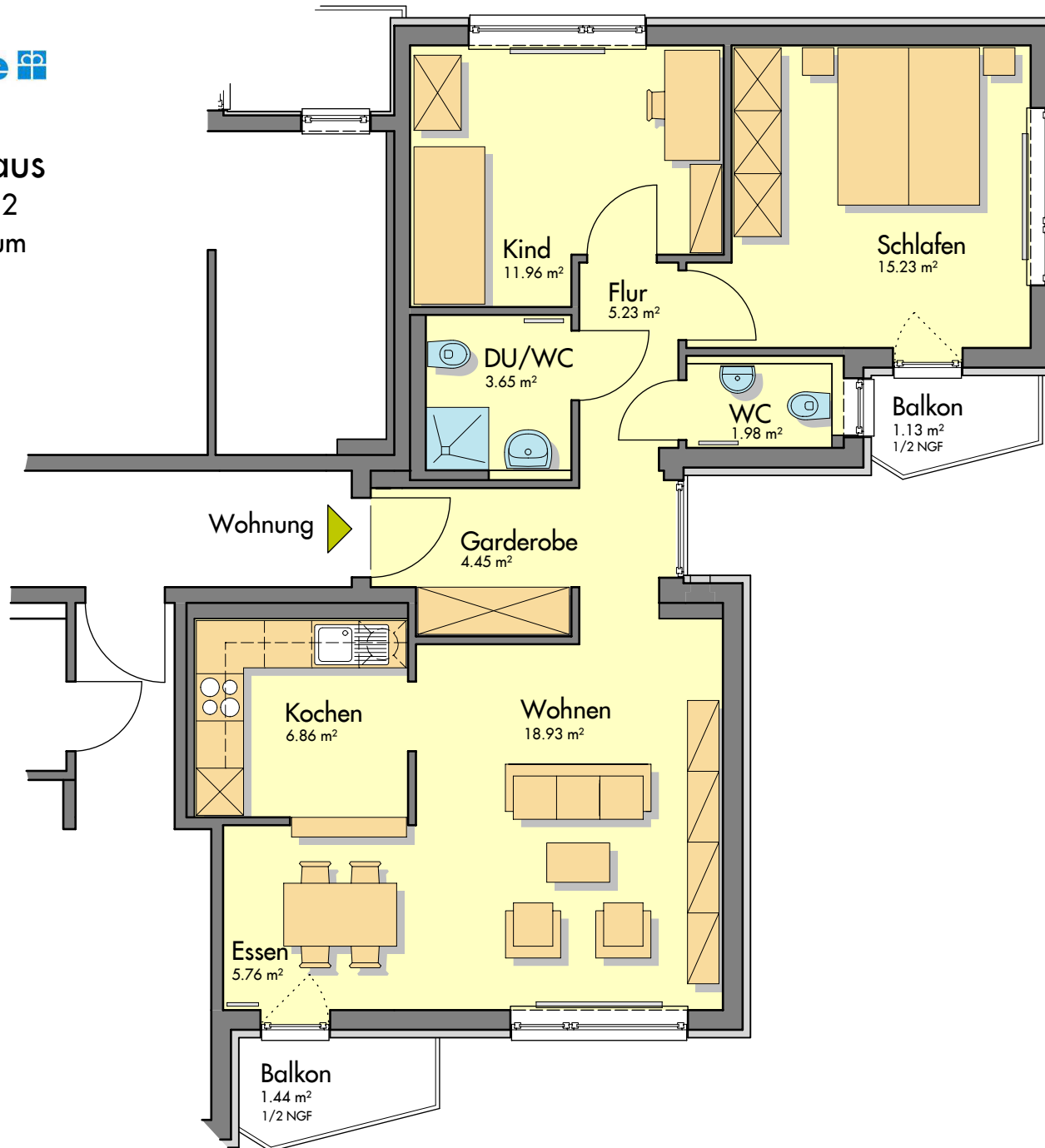
Typ4: 7 x vorhanden 66,61 m²

Wohnen	24,71 m ²
Kochen	10,32 m ²
Schlafen	19,59 m ²
Garderobe	2,44 m ²
DU / WC	4,06 m ²
WC	2,61 m ²
Balkon	1,44 m ²
(1/2 der NGF)	
Balkon	1,44 m ²
(1/2 der NGF)	



Wohnungstyp 4 (7x) 1.-7.OG





Wohnungstyp 5
NGF = 77,76 m²

Typ5: 1 x vorhanden 76,62 m²

Wohnen	18,93 m ²
Kochen	6,86 m ²
Essen	5,76 m ²
Schlafen	15,23 m ²
Kind	11,96 m ²
Garderobe	4,45 m ²
Flur	5,23 m ²
DU / WC	3,65 m ²
WC	1,98 m ²
Balkon	1,44 m ²
(1/2 der NGF)	
Balkon	1,13 m ²
(1/2 der NGF)	

Wohnungstyp 5 (1x) 7.OG

